

Nº B1A

1073 - 1100 SQ. FT. 2 BEDROOMS
2 BATHS

AMENITIES

- Resort-style pool & spa, outdoor kitchen, and sauna
- Fire pits, BBQ grills, and social spaces
- Coworking, conference room, and private office spaces
- Clubroom with games and shuffleboard
- Fitness center with free weights and cardio machines
- Pilates, yoga, and spin studio
- Scenic walking paths with bike rentals
- Covered parking & EV charging stations
- Onsite retail collection

FEATURES & FINISHES

- Stainless steel Whirlpool appliances
- Quartz countertops with subway tile backsplash
- Matte black fixtures in kitchen and bath
- Wood-style flooring with carpeted bedrooms
- Under-cabinet lighting & designer pendant lights
- Double vanities & walk-in closets*
- Full-size washer & dryer
- Private patios or balconies*

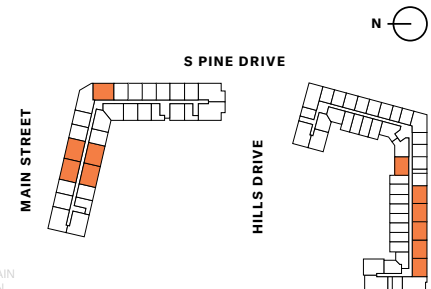
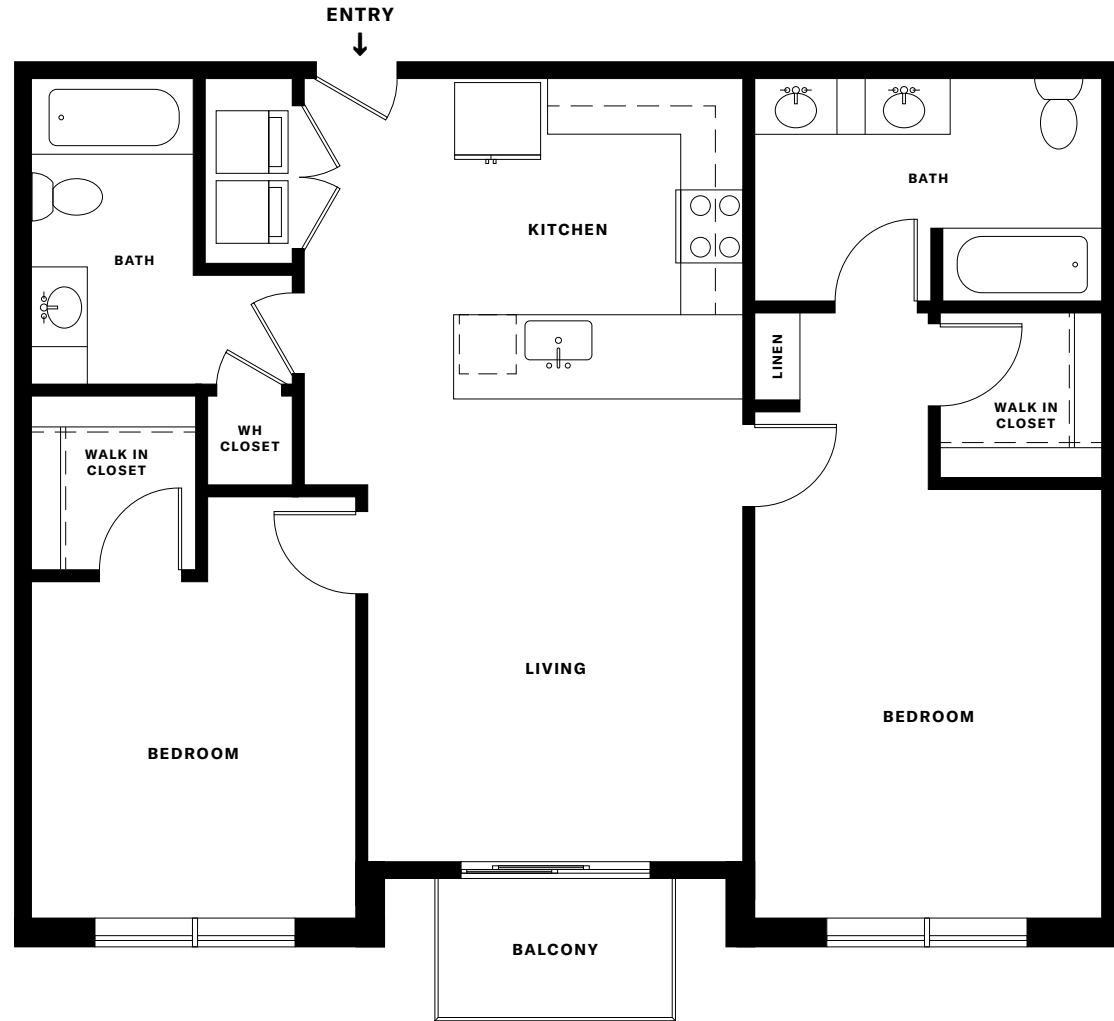
*Select apartments

NOTES:

SOUTH BUILDING:
11085 PINE DRIVE

NORTH BUILDING:
19865 MAINSTREET

PARKER, COLORADO 80138
LIVETHEJUNIPER.COM



THE JUNIPER
PARKER COLO.

ALL RESIDENCE DETAILS ARE APPROXIMATE AND SUBJECT TO CONSTRUCTION CHANGES AND OMISSIONS. PLANS MAY CONTAIN MINOR VARIATIONS FROM FLOOR TO FLOOR. PRICES AND AVAILABILITY ARE SUBJECT TO CHANGE WITHOUT NOTICE OR OBLIGATION.